



GMT MONTHLY MEMBERSHIP PROGRESS REPORT

Results as of: 5/31/2020

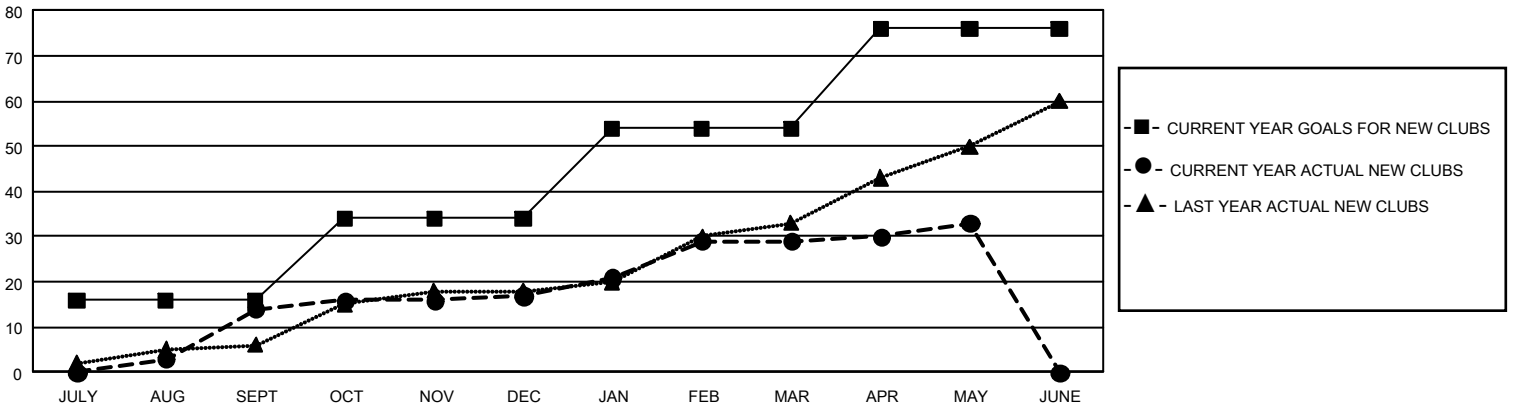
GMT Constitutional Area 5 - E, Group O

GMT: OPEN

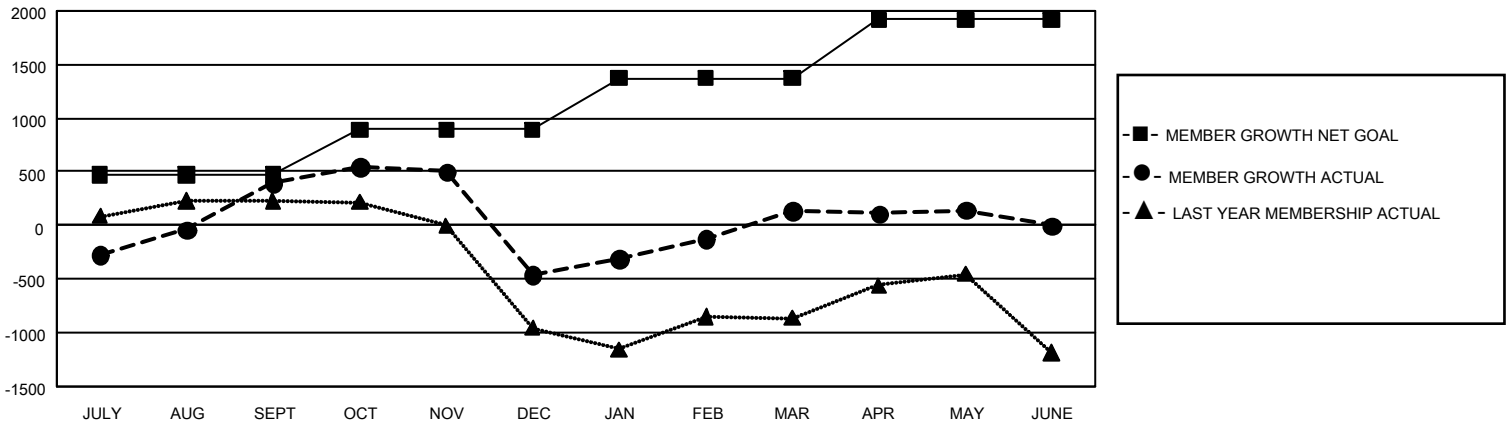
REPORT DOES NOT INCLUDE CLUBS IN UNDISTRICTED AREAS.

Clubs				Members			
RESULTS FOR 2019-2020				RESULTS FOR 2019-2020			
QUARTER	NEW CLUB GOAL	NEW CLUBS	DROPPED CLUBS	QUARTER	MEMBER GROWTH NET GOAL	MEMBER GROWTH ACTUAL	DROPPED MEMBERS ACTUAL (including transfers)
JULY/AUG/SEPT	48	14	18	JULY/AUG/SEPT	1,410	1,441	917
OCT/NOV/DEC	54	3	16	OCT/NOV/DEC	1,275	732	1,559
JAN/FEB/MAR	60	12	4	JAN/FEB/MAR	1,440	1,683	591
APR/MAY/JUNE	66	4	0	APR/MAY/JUNE	1,635	321	216

GOALS AND ACTUAL NEW CLUBS CUMULATIVE



GOALS AND ACTUAL MEMBERS CUMULATIVE



DROPPED CLUBS: 38	432 CLUBS OF 681 ADDED 1 OR MORE NEW MEMBERS	<u>GENDER DISTRIBUTION</u> MALE 11,093 (50.76%) FEMALE 10,759 (49.24%)
<u>DROPPED MEMBERS</u> DECEASED 75 CLUB CANCELLED 891 OTHER 2,301 <hr/> TOTAL 3,267	CLICK HERE FOR CUMULATIVE MEMBERSHIP DATA	TOTAL FAMILY UNIT MEMBERS 7,708 FAMILY MEMBERS PAYING HALF DUES 4,690